

## *Auchendarroch Flora and Fauna*

This garden is hot! With full sun all day long, this is where you can find the hardy, sun-lovers. Striking Yuccas frame the garden bed and the magnificent magnolia will delight you when it bursts out in its stunning white flower. Cycads, Cordyline, Proteas and Warratahs complete this display and are the inspiration behind the Auchendarroch House logo. Find the beautiful peacock, a symbol of spirituality, guidance, and protection.



## *Dee Dee's Secret Garden*

Cross the lawns to a special place for Deanna Wallis to remember her grandfather and the special times they spent together. Roses are a feature in this delightful gem with My Hero Rose and Brief Encounter Rose both dedicated to her Grandfather. Sit on the bench under the Manchurian Pear Tree and create your own special memories in this calming space.



## *Tapestry Sunlight and Shade*

A gardener's challenge, this visually amazing garden bed is under a blanket of thick shade but with a burst of full sun in the middle. A tapestry of beautiful colours and textures is on display, using foliage like tree ferns and Cordylines – the only flowers being the visually spectacular Canna Lillies.

# *'Discover The Gardens'*

October - March  
Every Sunday, 2pm

\$45

### Including:

- Guided tour of the garden
- High Tea
- Self guided tour of Auchendarroch House

Book now on  
8391 6100

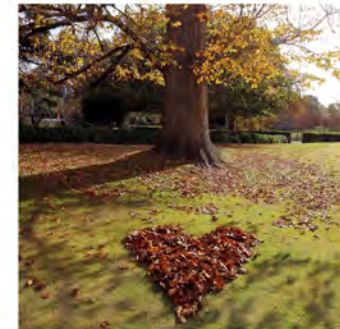
Auchendarroch House  
Adelaide Road, Mt Barker  
[auchendarrochhouse.com.au](http://auchendarrochhouse.com.au)



WALLIS  
AUCHENDARROCH  
HOUSE

GARDENS

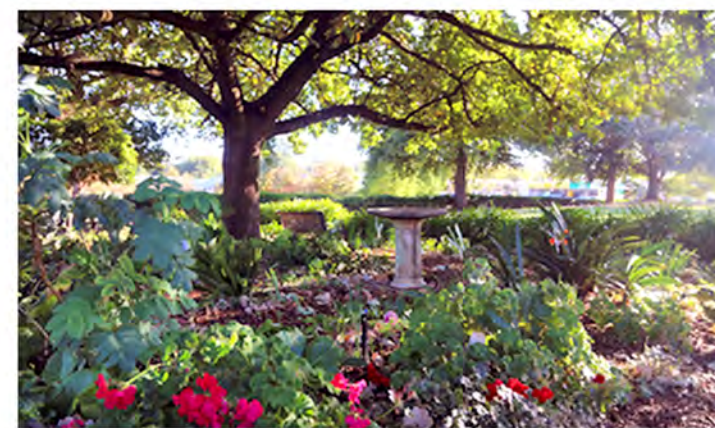
*A Story in Every Step*



Auchendarroch House  
Adelaide Road, Mt Barker  
[auchendarrochhouse.com.au](http://auchendarrochhouse.com.au)  
8391 6100

## *Jemima's Kitchen Garden*

Who doesn't love the tales of Beatrix Potter, and in particular the antics of Jemima Puddleduck! Potter's influence can be felt with her English heritage, her love of Scotland and her passion for landscapes, flora and fauna. You can find Jemima and her friend in this garden which is bathed in winter sun and cool and shaded in summer, thanks to the amazing tree canopy it resides under. Whilst beautiful, it is also practical, bursting with herbs like mint and thyme –you might even catch our Chef cutting some for you to enjoy when you dine with us.



## *Wallis Family Garden Bed*

Listen carefully and you can almost hear the kookaburras singing as you enjoy a meal and look out onto the Wallis Family Garden Bed. Full of cottage plants and bulbs with year round colour, it blooms at its absolute best from November to April. Enjoy the soft pink colour scheme of the roses including the Pierre de Ronsard Rose, the Pink Moon Rose and the Thank You Rose dedicated to Bob Wallis by his daughter Michelle. And look out for the kookaburras watching you from the birdbath!



## *Joanna's Garden of Serenity*

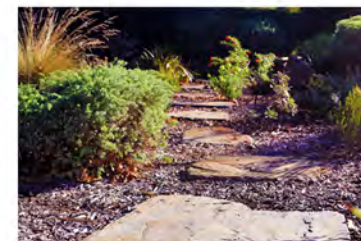
Feel instantly relaxed as you move through this garden. Named after Joanna Barr-Smith, the former owner of Auchendarroch House, this garden is at its best in winter where the shade loving plants are at their peak. A feeling of peace, serenity and old world charm engulfs you here. Ferns, clivea, geraniums, violets, pink bergenia, hellebores plus a variety of bulbs add to the calm, cool ambience of this garden. You might even catch the resident cockatoo in its favourite spot on the birdbath.

## *Heritage Rose Garden*

No visit to Auchendarroch Gardens is complete without a walk around this garden. Summer is the time to take in this garden's beauty with roses in full bloom. Take romantic wedding photos surrounded by roses in front of the "Lover's Statue". Be charmed by the Double Delight Hybrid Tea Rose with its citrus and spice fragrance and stunning red and cream blooms. See the La Sevillana Rose with its orange-red colour and mild fragrance and The Sir Donald Bradman Rose with its velvety dark red blooms and strong fragrance which takes its place in this garden as a tribute to the cricket loving Wallis family. The fragrances and colours are enchanting and with the choice of some modern roses like the Cinderella Climbing Rose, the Wallis family pay homage to their love of cinema and Disney.

## *Garden Weave of Natives*

Follow the stepping stones on a journey through this garden. Sit on a bench and take in the natural beauty or escape along the meandering paths. Correas provide year round colour, hardy Australia Native Westringia attract the bees and small birds and Erica's compliment the history of the House with their Scottish Heather feel. Bordering the bed is the stunning Crepe Myrtle tree with its distinct black foliage and masses of crimson blooms in summer.



## *Lawns*

Romance and fun abound on the beautifully manicured lawns flowing out from the front of the house and framed by well-established deciduous and evergreen trees. The perfect venue for ceremonies under the giant English Elm, wedding photos, a picnic, outdoor cinema, a game of croquet or just a relaxing drink. A delightful meeting place for locals and tourist alike with easy access from the street, carpark or Auchendarroch House.

